
TheTateGroup

We've got the goods™

A photograph of a bookstore interior. The store is filled with bookshelves and display tables. In the foreground, a white table holds stacks of books and stationery. A woman in a black jacket and patterned skirt is browsing books on a shelf to the right. The background shows more bookshelves and a large window. A red text box is overlaid in the center of the image.

TheTateGroup Products for Book & Stationery Retailers



A little bit about TheTateGroup:

- We distribute 30+ collections of innovative and practical giftware for your home, body and kids
- All products are priced in Canadian wholesale dollars and ship from Toronto
- You can combine multiple brands on one order
- Visit our website at www.thetategroup.com
-  Indicates Canadian owned company

HOW TO ORDER:
call 416-504-8047
or order online through:



shopzio.com



TheTateGroup Booth Images

Lingo

by The Tate Group



- Lingo Cards is a leading global brand of playing cards. Founded in 2014 through a Kickstarter campaign by a free-spirited traveler, we have now grown into a global brand of fun and beautifully-designed travel products that are played and loved all over the world.
- Beautifully-Designed, Premium Quality Playing
- Learn 12 Languages while playing cards. Spanish, Italian, Japanese, French, Mandarin, German to Russian, Aussie, American, Kiwi, British Millennial Slang playing cards also available.

[Lingo Catalogue](#)
[Lingo Pricelist](#)

Play cards, pick-up a language with Lingo Cards!

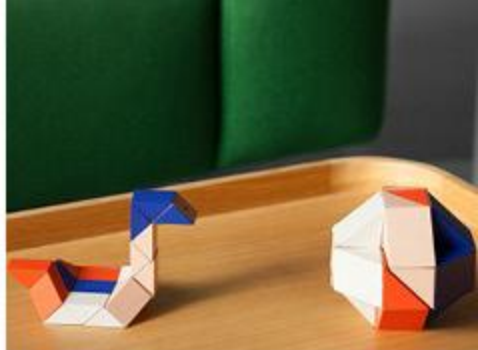




[Lingo Catalogue](#)
[Lingo Pricelist](#)

Areaware

by The Tate Group



AREAWARE

- New York City based producer of everyday objects that are both functional and unusual.
- Design based toys and puzzles to inspire and engage.
- Areaware collaborates with product designers who range from those well established in their field, to students just starting out in this creative field.
- Combines whimsy and nostalgia for a truly modern take on products.



[Areaware Catalogue](#)
[Areaware Price List](#)



SUCK UK

by The Tate Group

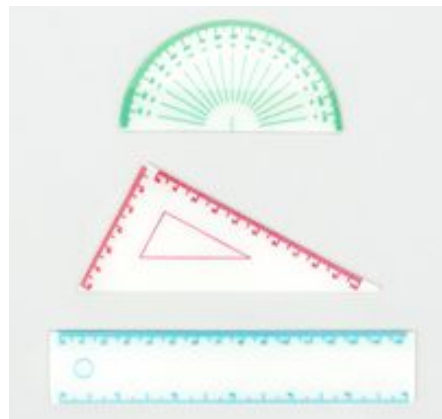
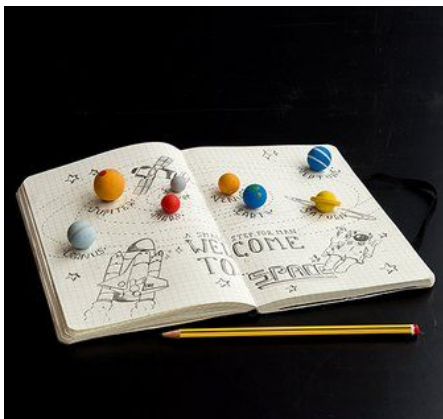




- London based designer of toys and home essentials.
- Products designed in-house and manufactured with care.
- Suck UK stands out from the crowd, delivering memorable products, innovation, and wit.



[Suck UK Catalogue](#)
[Suck UK Price List](#)



Hygge Games

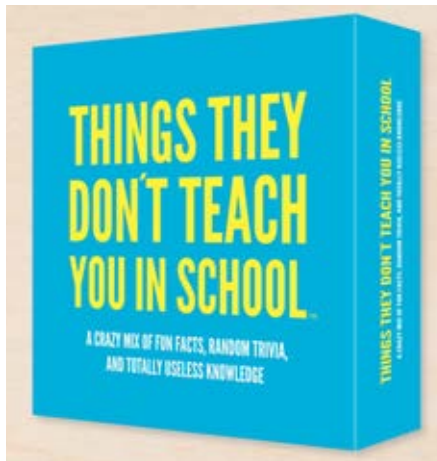
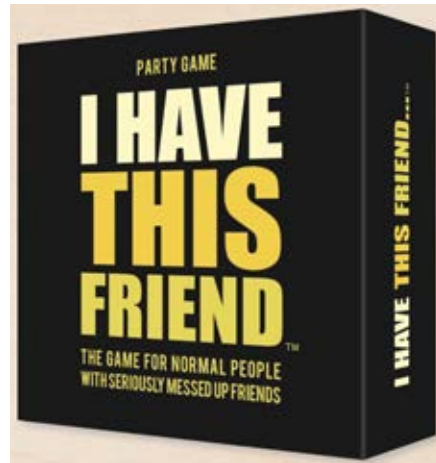
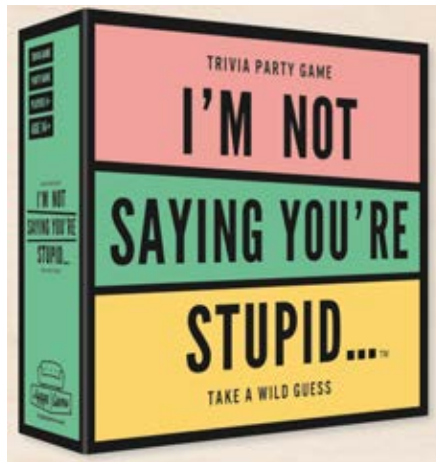
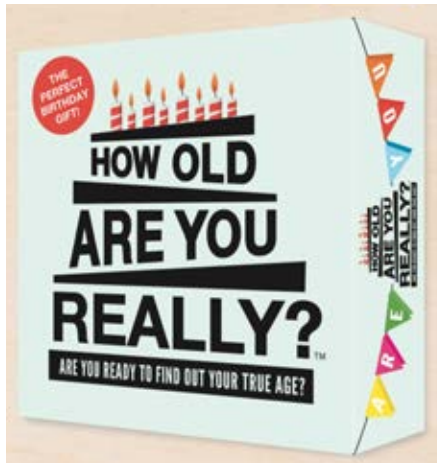
by The Tate Group



- Fun games to inspire meaningful entertaining conversations.
- A wide variety, from family friendly to party games.

[Hygge Games Catalogue](#)
[Hygge Games Price List](#)





Adulting for the Win

by The Tate Group



- Real life is hard and people deserve credit for day after day somehow completing life's basic tasks.
- Buy a ribbon and recognize your friends, your family and your lover(s).
- Canadian owned and designed company.

[Adulting For The Win Catalogue](#)
[Adulting For The Win Price List](#)



Badge Bomb

by The Tate Group



- Button boxes, enamel pins, and patches, magnets and stickers designed by world class artists.
- Badge Bomb buttons and magnets are pressed on site with recycled steel (post-industrial soup can scraps).
- Buttons are in boxes (treasure chests as we like to think of them), magnets on lockers, and patches stapled to their display cards to prevent millions of plastic bags from going into landfills.
- Badge Bomb is our way of contributing messages of self-acceptance, positivity, and some good ole puns to make you smile.



[Badge Bomb Catalogue](#)
[Badge Bomb Price List](#)

Badge Bomb Puzzles



Enamel Pins



Embroidered Patches



[Badge Bomb Catalogue](#)
[Badge Bomb Price List](#)

IF

by The Tate Group





Reading real books is even cooler now with the If collection of reading accessories; book lights, bookmarks, magnification tool, book and tablet holders, notebooks and more...

- Easy to display POPs
- Great assortment for all ages

[IF Catalogue](#)
[IF Price List](#)





[IF Catalogue](#)
[IF Price List](#)

Beyond123

by The Tate Group



- Exquisite products with high-value design that inspire creative play for all ages.
- High quality toys to inspire creative play and benefit children.
- Bestsellers include Lollilofters, PlayableArt, and FingerMax finger paints



[Beyond 123 Catalogue](#)
[Beyond 123 Price List](#)

Playable Art

Designed to inspire.



Mufun

Delightful Wooden Designs



[Beyond 123 Catalogue](#)
[Beyond 123 Price List](#)



[Click image to watch video link](#)

Copernicus Toys

by The Tate Group





- Science based activity kits, smart stocking stuffers and classic toys.
- Engaging and educational activities and experiments.
- Bestsellers include Root Beer Kit, Chemistry Kits, GLUX putties, Compact Curiosities, and Robotic Kits.



[Copernicus Toys Catalogue](#)
[Copernicus Toys Price List](#)

Robotic Kits



Tasty Experiments



Amusemints

by The Tate Group



- Exciting, unique and eye-catching gifts
- Creatively designed, with functional packaging
- Mint tins are also collectible keepsakes
- Wide variety of designs, for kids & adults
- High quality mints with unique, eye catching packaging

Mints With Attitude



[Amusemints Catalogue](#)
[Amusemints Price List](#)

54 Celsius

by The Tate Group

54° CELSIUS

- A Collaboration between product designers, graphic designers, and expert candle makers in the USA and abroad.
- A collection of unique candles, including the Pyropet collection of animal candles that melt to reveal the skeleton underneath, Tarot Candles and Twist Candles



[54 Celsius Catalogue](#)
[54 Celsius Price List](#)



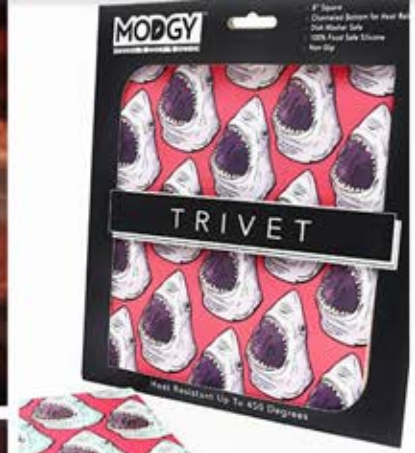
MODGY
by The Tate Group



- Typical home goods transformed into products that fit modern spaces and design preferences.
- Uses recycled products where possible, and technology to lower energy usage
- Vases and luminaries are constructed of BPA-free plastic materials, making them expandable, shatterproof and recyclable!
- Silicone Trivets and Jar openers
- Collapsible vases are the perfect “mailable” gift.

[Modgy Catalogue](#)
[Modgy Price List](#)





LJ Face Masks

by The Tate Group

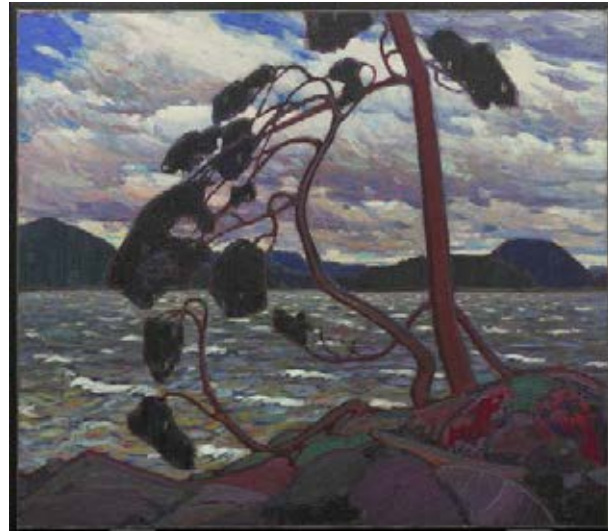
LJ Face Masks

- LJ masks are washable, the filters are replaceable.
- Filters offer 5 layers of protection. The masks measure over 7" across the center of your face.
- Adjustable straps and a nose clip.
- Two layers: Cotton on mouth, poly for print side.
- Featuring Designs by Canadian Artists: Jack Bush, Harold Town, Tom Thomson.



[LJ Face Masks Catalogue](#)

[LJ Face Masks Pricelist](#)



Tom Thomson - The West Wind
Winter 1916-1917



Anita Cole - A Sea of Poppies

Ready to order?

Online:



shopzio.com

By Phone:

[p] 416-504-8047

By Email:

info@thetategroup.com

peter@thetategroup.com

camille@thetategroup.com

TheTateGroup

1 Wiltshire Ave.
Unit 114
Toronto, ON
M6N 2V7, Canada

www.thetategroup.com

TheTateGroup

We've got the goods™